

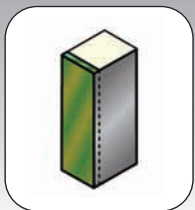
## Forms an air-tight seal between building and standard size trailers

Designed to work best where the vehicles are generally a standard size, the CS-101 is an economical way to form an air-tight seal between the building and the back-end of the trailer for dock openings up to 8' x 8' (2438 mm x 2438 mm). The resilient foam pads can be covered with a large selection of tough abrasion resistant fabrics creating a tight seal that blocks out the foul weather, insects, dust and may reduce theft, while saving money on energy costs. The CS-101 dock seal will increase the comfort and productivity by increasing safety, protecting personnel, products and equipment.



- Custom sized to ensure a perfect seal.
- Backing is made with the highest quality pressure treated wood.
- Long lasting and low maintenance.
- Galvanized steel mounting brackets.
- Yellow guide stripe is vulcanized (heat sealed); not sewn in.
- Long lasting, high quality vinyl with U.V. stabilizer to prevent fading.
- No structure to crush, high density memory foam compresses on all sides reducing damage.

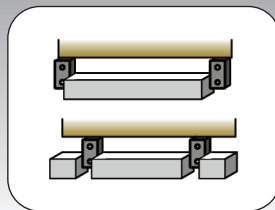
### OPTIONS



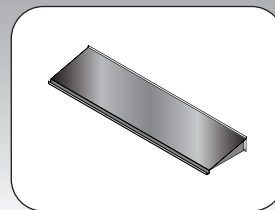
A. Cover material overlap



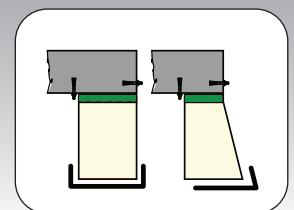
B. Protective flaps (4", 8", 16" (101, 203, 406 mm) exposure)



C. Bottom pads



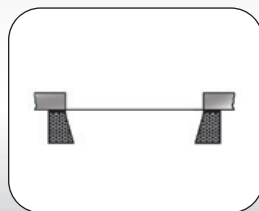
D. Galvanized steel canopy



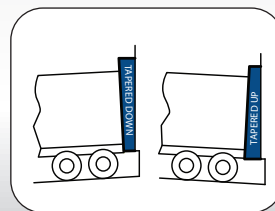
E. Double layer of fabric on impact area.



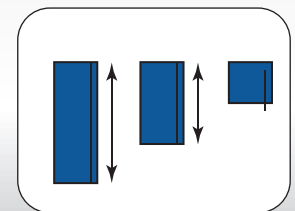
F. Touch and hold velcro drop curtain (12" -18" (305mm -457 mm drop)



G. Beveled vertical pads (8/11 - 12/15 - 12/18)



H. Tapered units

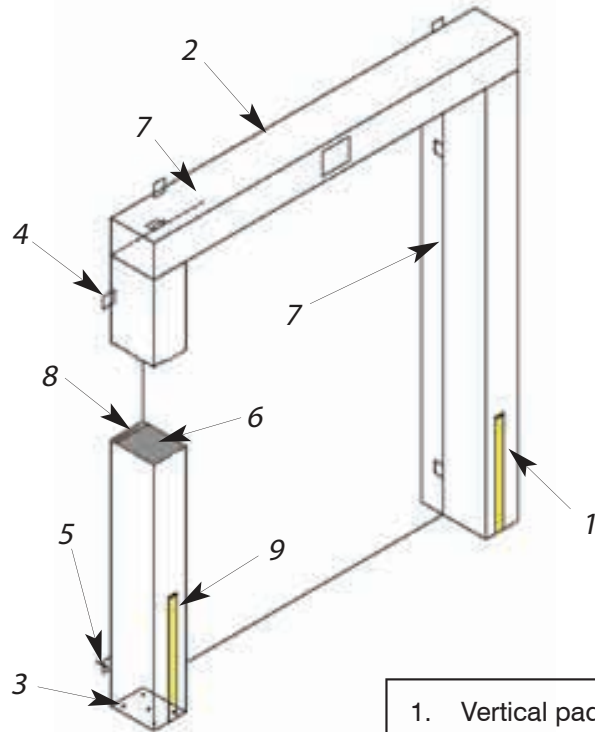


I. Higher head pad (up to 24" (610mm) H)

# Specifications

## CS-101 Product Details

- CS-101 standard dimensions for door openings 8' wide by 8' (2438 mm x 2438 mm) have two (2) 8' (2438 mm) high vertical pads and one (1) 10' (3048 mm) long head pad with 12" (305 mm) face and cubed shaped. Unit projection to be 10" (254 mm).
- Seals trailers 12' to 13' (3658 mm x 3962 mm) from grade with a dock height of 48" (1219 mm).
- A large selection of cover fabrics available including our exclusive SS-90-1 high performance vinyl and 16 oz "RipStop". Other fabrics and colors are available include: hypalons and vinyls (see fabric page).
- Can be fitted for openings up to 9' wide by 9' high (2743 mm x 2743 mm) by the use of wedge shaped vertical and head pads.
- 4" (102 mm) maximum pad projection in front of the dock bumper face is recommended to prevent over compression, excessive wear and tear and undue building wall pressure.



1. Vertical pads
2. Head pad
3. Air vents
4. Galvanized steel mounting brackets
5. 3/8" sleeve
6. Polyurethane foam core
7. Cover fabric
8. Pressure treated wood backing
9. 4" wide 24" high yellow guide stripe

Dock door seal(s) to be as CS-101 manufactured by Blue Giant Equipment Corporation, Brampton, Ontario. Dock door seal(s) \_\_\_\_\_ ft./mm W x \_\_\_\_\_ ft./mm H, using pressure treated wood and a high density, light weight urethane foam core with 98% compression recovery and maintaining flexibility at -40 degrees (fire retardant formula available; please specify). The foam core shall be continuously bonded (not spot glued) to the wood backing with a high quality, non-flammable elastic adhesive. Cover fabric overlaps the wood backing, totally enclosing it, and is fastened with heavy duty plated staples. All foam pads are vented through holes allowing air to be exhausted and moisture to drain when pads are compressed. Vertical pads are tapered cut at the bottom to prevent sagging, pinching, and wearing when compressed. Vertical pads have a 24" h or optional full height 4" yellow guide strip to aid in spotting trailers. Unit shall be furnished with all necessary mounting hardware, galvanizing to resist corrosion.



85 Heart Lake Road South  
Brampton, Ontario, Canada L6W 3K2  
Phone: 905-457-3900 • Fax: 905-457-2313  
[www.BlueGiant.com](http://www.BlueGiant.com)

AUTHORIZED DISTRIBUTOR

## BLUE GIANT EQUIPMENT CORPORATION

BLUE GIANT offers a full line of Loading Dock Equipment including Dock Levelers, Vehicle Restraints, Dock Seals and Shelters and Material Handling Solutions. Concurrent with our continuing product improvement program, specifications are subject to change without notice. Please contact BLUE GIANT for latest information. Some features illustrated may be optional in certain market areas.