

# stationary truck shelter

4 0 1 S E R I E S

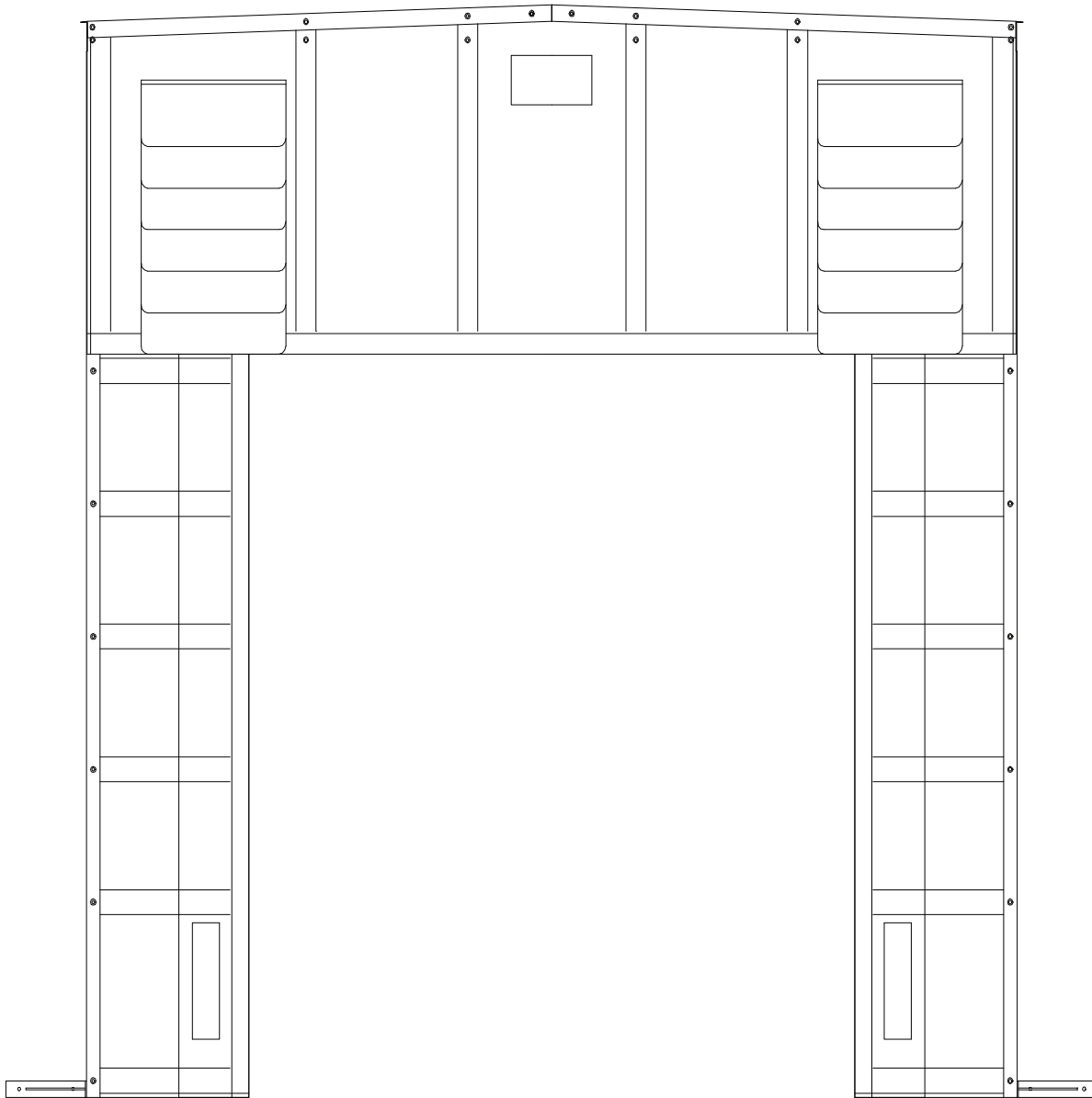
# BLUE GIANT®

Loading Dock Solutions

TEL: (905) 457-3900 (800) 668-7078  
FAX: (905) 457-2313 (800) USA-BLUE

Blue Giant Equipment Corporation  
85 Heart Lake Road South  
Brampton, Ontario L6W 3K2  
CANADA

<http://www.bluegiant.com>



## INSTALLATION LISTS

THE FOLLOWING LISTS COVER BASIC INSTALLATION

### COMPONENT LIST

DESCRIPTION	QTY.
Vertical Panels	2
Header Panel	1
Vertical Frames	2
Head Frame	1
Stabilizing Brackets (standard if no protective guards)	1

### HARDWARE SUPPLIED LIST

DESCRIPTION	QTY.
3/8" x 3" Sleeve Anchor	9
1/4" x 1-1/4" Concrete Screws (Stabilizing Brackets)	4
3-Hole Mounting Brackets	9
4-Hole Mounting Brackets	2
1/4" x 1-1/2" Self-Drilling Screws	62
3/8" Washers	28
No. 10 x 3/4" Self-Drilling Screws	12
1/4" Washers	12
Wind Straps (24" Bungee)	2
4-Hole Mounting Brackets (Bottom Pad Option)	4
No. 14 x 1-1/2" Flat Quad Screws (Bottom Pad Option)	8
1/4" x 1-1/2" Self-Drilling Screws (Bottom Pad Options)	8
Installation Instructions	1

### RECOMMENDED TOOLS LIST (TYPICAL MASONRY WALL)

	QTY.
Tape Measure	1
Level	1
Pencil or Marker	1
Square	1
Power Drill	1
Caulking Gun	1
No. 2 Robertson Screw-Driver	1
Caulking -Outdoor Acrylic Type	1
Hammer Drill	1
Hammer	1
3/8" Hex Head Driver Bit	1
3/8" Masonry Drill Bit	1
1/2" Wrench	1
Flat 2" x 4" Supports	1

## INSTALLATION INSTRUCTIONS

READ ALL INSTRUCTIONS BEFORE INSTALLING SHELTER. BLUE GIANT WILL NOT BE HELD RESPONSIBLE FOR IMPROPER INSTALLATION OF ANCHORING DEVICES OR FOR INSTALLATION INTO AGED OR UNSOUND CONCRETE, CONCRETE BLOCK, OR OTHER WALL OR FLOOR MATERIAL WHICH MAY RESULT IN PREMATURE PRODUCT WEAR, PRODUCT FAILURE, PROPERTY DAMAGE, OR PERSONAL INJURY.

### 1. CHECK ORDER

#### a. Measure door opening height and width.

- Make sure dimensions match Purchase Order.
- Shelter door opening varies according to dimensions of existing door.
- Make sure there is enough space to install shelter.
  - \*Check for existing:
    - dock seals
    - bollard and obstacles
    - lights and conduit
    - drains

**NOTE: MAKE SURE THERE IS ENOUGH SPACE BETWEEN THE DOOR OPENING AND THE FRAMES TO INSTALL THE MOUNTING BRACKETS ON THE INSIDE OF THE SHELTER.**

*\*\*If there is not enough space, install mounting brackets on the outside of the frames (Fig. 1a).*

#### b. Check Components List and Hardware Supplied List to make sure all listed are present (Page 1).

#### c. Check Recommended Tools List and make sure all are available (Page 1).

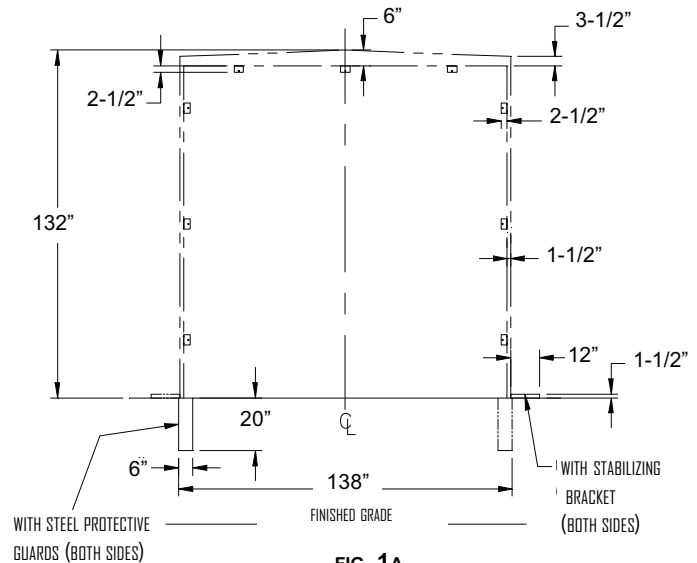
#### d. Determine method of mounting to wall.

- Blue Giant supplies 3/8" sleeve anchors with the shelter. **The customer must supply any other mounting hardware**, including that for Steel Protective Guards.

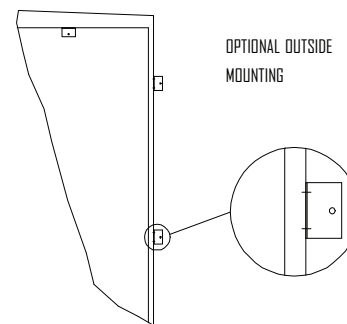
#### Method of Mounting:

1. **Concrete Block, Precast Concrete, or Brick Wall:** Use supplied sleeve anchors. If anchors will not hold, use 3/8" threaded rod for through-bolt (not supplied).
2. **Metal Siding:** Use 3/8" threaded rod for through-bolt fastening with steel or wood backup plate (not supplied).

WELDING THE SHELTER TO THE WALL IS NOT RECOMMENDED.



**FIG. 1A**



**FIG. 1B**

## 2. PREPARE DOCK DOOR OPENING

### a. Measure and mark center of dock door opening (Fig. 2).

- Mark centerline on dock floor.
- Mark centerline on lintel above door.
- \*\*Extend line to 138" above dock floor.
- Make sure marks are plumb to each other.

### b. Draw a level line even with the dock floor along both sides of dock face.

### c. Measure Head Frame width and divide by 2.

### d. Mark Vertical Frame positions.

- Measure 1/2 the Head Frame width from dock floor centerline to one side of level line. *Mark.*

### e. Repeat for other side.

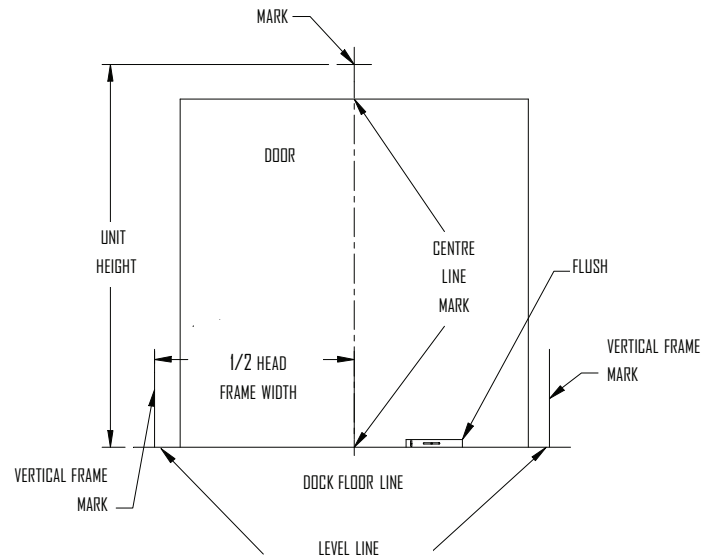


FIG. 2

## 3. MOUNTING STABILIZING BRACKETS OR STEEL PROTECTIVE GUARDS

### a. Position Bracket or Guard.

#### -If Bracket:

- Place bracket on its side, flush to wall along top of level line, extending away from door opening (Fig. 3a).
- Position other bracket leg along outside of vertical frame mark.

#### -If Guard:

- Determine left and right protective guards.
- The welded bracket goes to the side farthest away from door opening (Figure 3b).
- Place top flat surface of protective guard along level line.
- Place outside edge of protective guard 5/8" outside vertical frame mark.

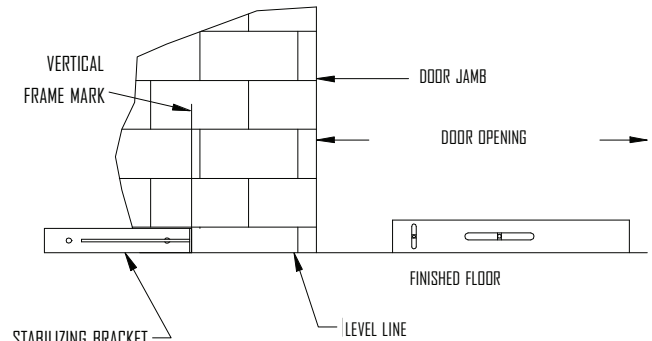


FIG.3A

### b. Bracket or Guard must be perpendicular to building wall, level, and square. Shim if necessary.

### c. Bolt Bracket or Guard to wall.

- If Bracket: Use 1/4" x 1-1/4" concrete screw (supplied) or appropriate mounting hardware.

- If Guard: Recommend using 5/8" x 3-1/2" wedge anchor bolts or appropriate mounting hardware (not supplied).

### d. Repeat for other side.

### e. Make sure left and right Brackets or Guards are level to each other.\*\*\*

\*\*\*FOR COMMON MEMBER ORDER, SEE OPTIONS INSTRUCTION MANUAL #01 (PG. 11) BEFORE PROCEEDING TO STEP 4.

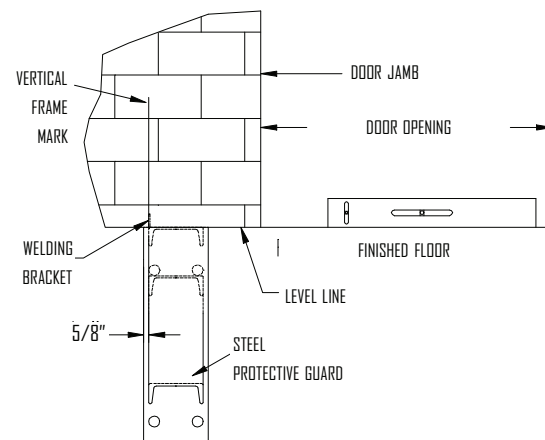


FIG.3B

#### **4. ATTACH MOUNTING BRACKETS TO VERTICAL FRAMES**

##### **a. Place Vertical Frames on clean, flat 2 x 4 supports.**

-Place siding face down, wall edges to inside.

NOTE: DO NOT PUNCTURE OR SCRATCH SIDING.

##### **b. Position Mounting Brackets on Wall Edge of Vertical Frame (Fig. 4).**

-Use three (3) 3-hole Mounting Brackets per Vertical Frame.

-Measure 12" in from top and bottom of Vertical Frame.

-Position top and bottom Mounting Brackets inside of 12" mark.

-(Place along wall side, angle flush to edge).

-Position third Mounting Bracket in center.

##### **c. Attach Mounting Brackets to Vertical Frame with 1/4" self-drilling screws.**

##### **d. Position 4-hole Angle Bracket on Vertical Frame (Fig. 4).**

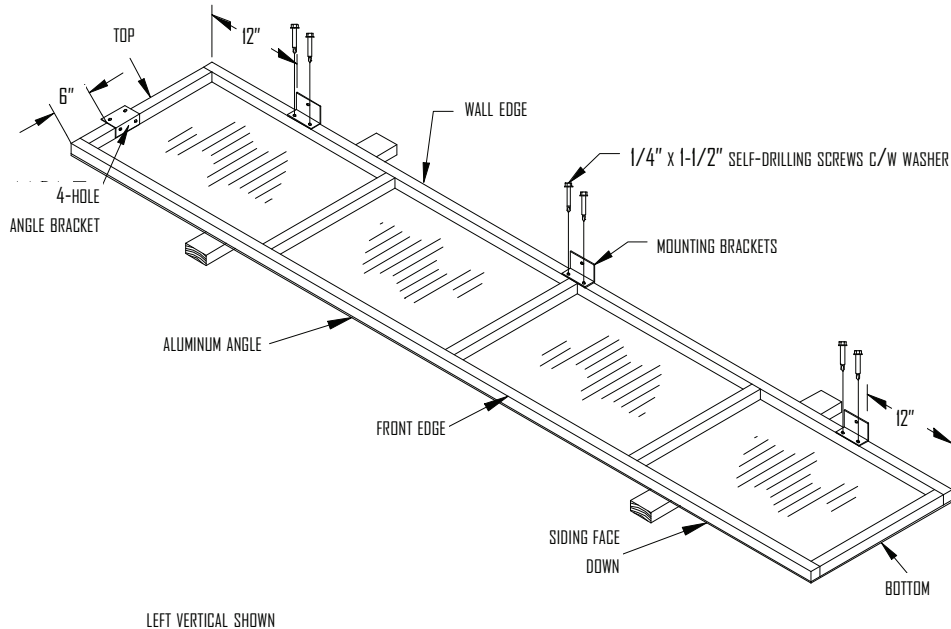
-Measure 6" in from Front Edge on top cross-member.

-Position 4-hole Mounting Bracket on bottom of top cross-member.

-NOTE: THE TOP OF THE BRACKET WILL EXTEND ABOVE THE VERTICAL FRAME.

-Attach the Mounting Bracket to the Vertical Frame with 1/4" self-drilling screws.

##### **e. Repeat steps b, c, and d for other Vertical Frame.**



**FIG. 4**

## 5. ATTACHING VERTICAL PANELS TO VERTICAL FRAMES

\*\*\*FOR SUPERSNUG APPLICATION PLEASE SEE OPTIONS INSTALLATIONS #02 (PG.13) BEFORE CONTINUING WITH INSTRUCTIONS.

### a. Preparing vertical frames.

- Remove aluminum angle from front edge (re-attach in step 5c).
- Determine left and right vertical panels.
- Rest vertical frame on wall edge and mounting brackets (Fig. 5a).
- Raw edge attaches to vertical frame.
- Yellow stripe appears at bottom and "Z" reinforcement appears at the top.

### b. Position and secure vertical panel.

- Place bottom of vertical panel flush with bottom of vertical frame (Fig. 5a).
- Raw edge flush with frame edge.
- Secure at bottom with no. 10 self-drilling screw and 1/4" washer.
- Do not put screw through stay.
- Spread rest of vertical panel along vertical frame.
- Keep flush with frame edge, ensuring a tight fit.

**NOTE: VERTICAL PANEL WILL BE SHORTER THAN THE VERTICAL FRAME.**

- Secure vertical panel between stays with three other evenly spaced no. 10 self-drilling screws and 1/4" washers.

### c. Re-attaching aluminum angle to front edge of vertical panel.

- Match holes in aluminum angle with holes in vertical panel stays (Fig. 5b) washers.
- Attach to vertical frame using 1/4" self-drilling screws and 3/8" washers.

### d. Attaching wind straps.

- Place wind strap "s" hook at hole at top of vertical frame (Fig. 5c)
- Attach "s" hook 1" down from top and 3/4" in from outside edge.
- Use 1/4" self-drilling screws and 3/8" washers.
- Pull wind strap down 36" along aluminum angle or until taut.
- Attach bottom "s" hook 3/4" in from outside edge.
- Use 1/4" self-drilling screw and 3/8" washer.

### e. Repeat steps a-d for other vertical frame panel.

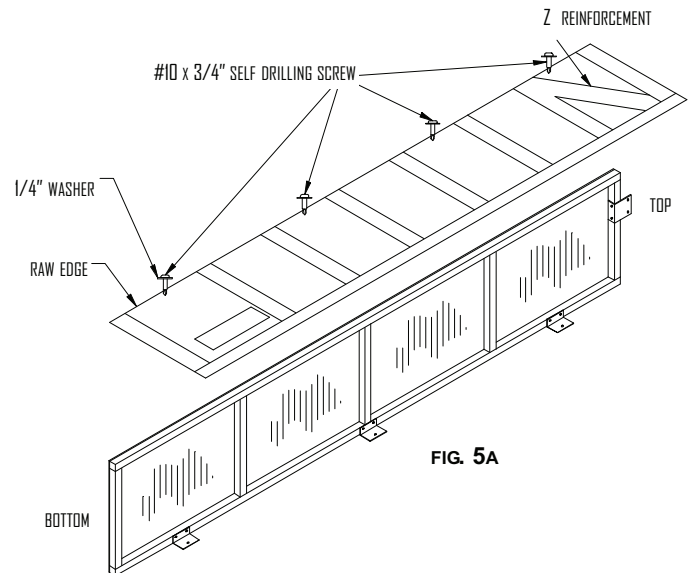


FIG. 5A

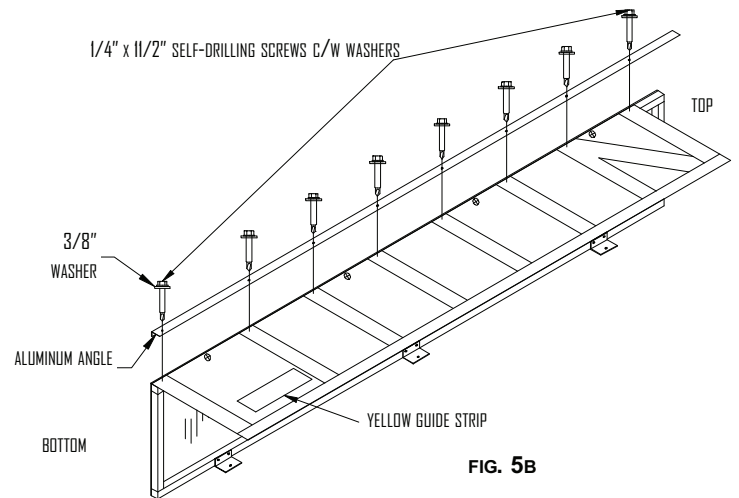


FIG. 5B

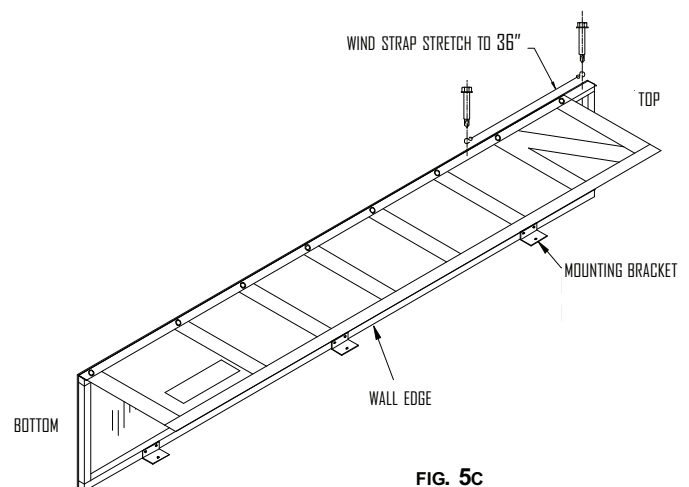


FIG. 5C

## 6. HEAD FRAME

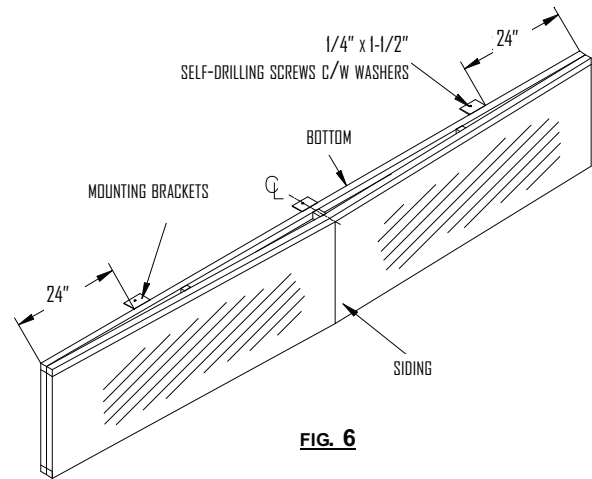
### a. Prepare head frame.

- Determine front from back.
- Remove aluminum angle from front edge.
- Place head frame front down on clean, flat, 2"x 4" supports (supplied by others).

**NOTE: DO NOT PUNCTURE OR SCRATCH SIDING.**

### b. Position Mounting Frames.

- Use 3-hole mounting brackets.
- Measure 24" in from each end of head frame (Fig. 6).
- Place left and right mounting brackets *inside marks*.
- Place mounting brackets along bottom of head frame, corner flush with back of frame.
- Place third mounting bracket in centre.
- Fasten brackets to frame with 1/4" self-drilling screws.



**FIG. 6**

## 7. ATTACHING VERTICAL FRAMES TO WALL

### a. Positioning vertical frame.

#### 1. If using stabilizing bracket:

- If desired, temporarily mount a bracket (not supplied) at level line and vertical frame mark to support vertical frame while attaching to wall (Fig. 7a).
- Lift vertical frame up onto wall.
- Place wall edge flush to wall.
- Place siding flush to vertical frame mark.

#### 2. If using steel protective guard:

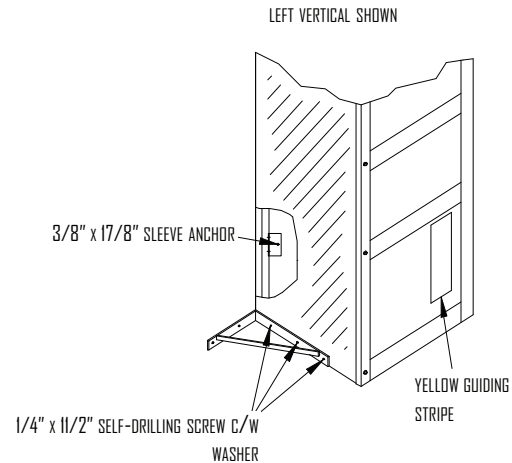
- Lift vertical frame on top of protective guard (Fig. 7b).
- Place wall edge flush with wall.
- Place siding flush to welding bracket on protective guard.

**NOTE: MAKE SURE VERTICAL FRAME IS PLUMB, LEVEL, AND SQUARE.**

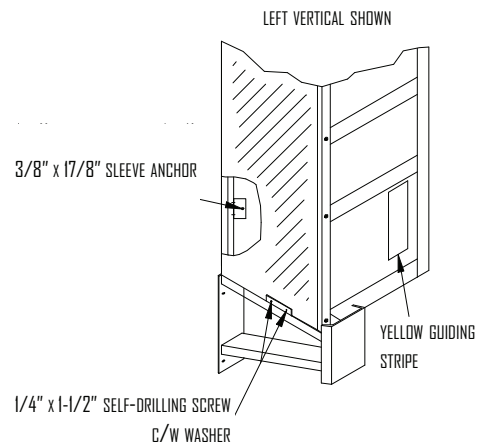
### b. Attaching to wall.

- Drill hole through bottom mounting bracket only.
- Insert sleeve anchor or other appropriate mounting hardware into bottom mounting bracket hole.
- Attach vertical frame to stabilizing bracket or protective guard.
- Insert 1/4" self-drilling screws into holes in stabilizing bracket or holes in welded bracket on protective guards.
- Secure.

### c. Repeat for other vertical frame.



**FIG. 7A**



**FIG. 7B**

## 8. ATTACHING HEAD FRAME TO VERTICAL FRAME

### a. Preparing head frame.

-Lift head frame to vertical frames.

**NOTE: USE APPROPRIATE AND SAFE LIFTING METHOD.**

### b. Attach head frame to vertical frames.

-Set head frame on outside of left and right angle brackets.

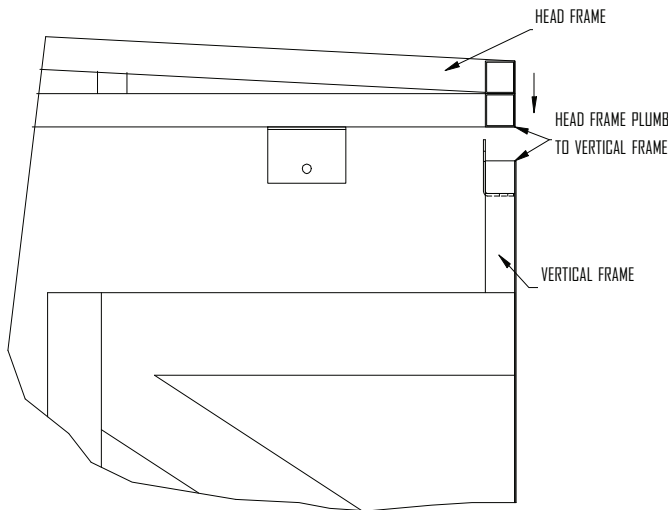
-Position head frame flush to wall and flush to front of vertical frames. *Shim where necessary.*

**NOTE: THIS ENTIRE SHELTER MUST BE PLUMB, LEVEL, AND SQUARE TO FUNCTION PROPERLY.**

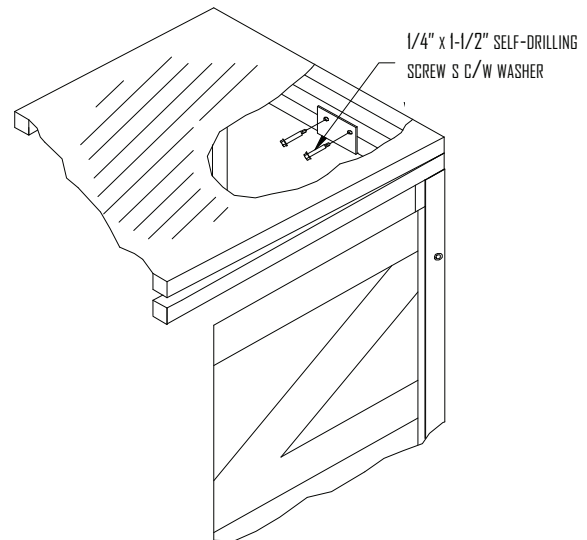
-Insert 1/4" self-drilling screws through angle brackets and secure (Fig. 8b).

-Drill at top of angle bracket holes.

-Repeat for other side.



**FIG. 8A**



**FIG. 8B**

## 9. ATTACH HEAD FRAME AND VERTICAL FRAME TO WALL

a. Make sure entire shelter is plumb, level, and square (Figure 9a). Shim where necessary.

**NOTE: THIS SHELTER MUST BE PLUMB, LEVEL, AND SQUARE TO FUNCTION PROPERLY.**

### b. Attach Head Frame to wall.

- Drill hole through center mounting bracket.
- Insert sleeve anchor or other appropriate mounting hardware into hole.
- Tighten.
- Repeat for left and right mounting brackets.

### c. Attach Vertical Frames to wall.

- Drill holes through remaining mounting brackets (Fig. 9b).
- Insert sleeve anchors or other appropriate mounting hardware into holes.
- Tighten.
- Repeat for other vertical frame.

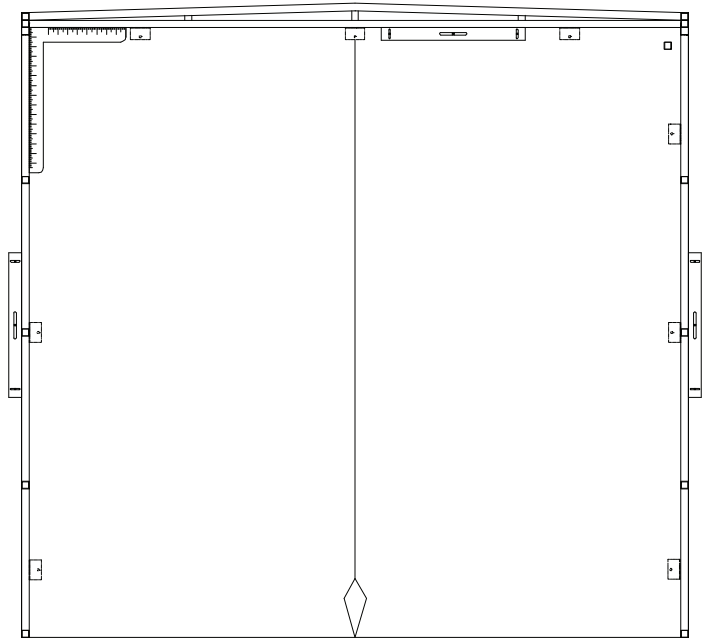


FIG. 9A

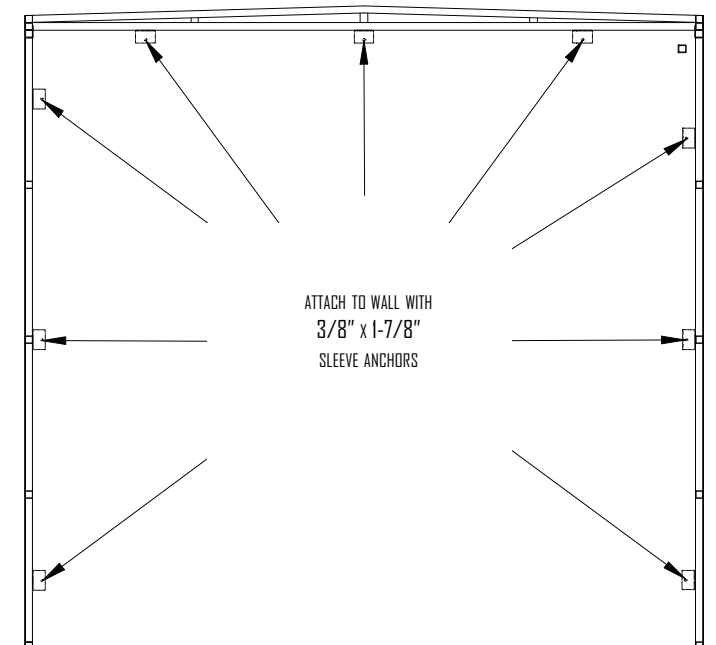


FIG. 9B

## 10. ATTACH HEAD CURTAIN TO HEAD FRAME

### a. Position and secure header curtain.

- Logo is on front of header curtain.
- Match top center of header curtain with top center of head frame (Fig. 9a).
- Place raw edge flush to frame edge.
- Secure with No. 10" self-drilling screws and 1/4" washers.
- Spread rest of header curtain along head frame.
- Keep flush with edge, ensuring a tight fit.
- Secure header panel between stays with four evenly spaced No. 10" self-drilling screws and 1/4" washers.

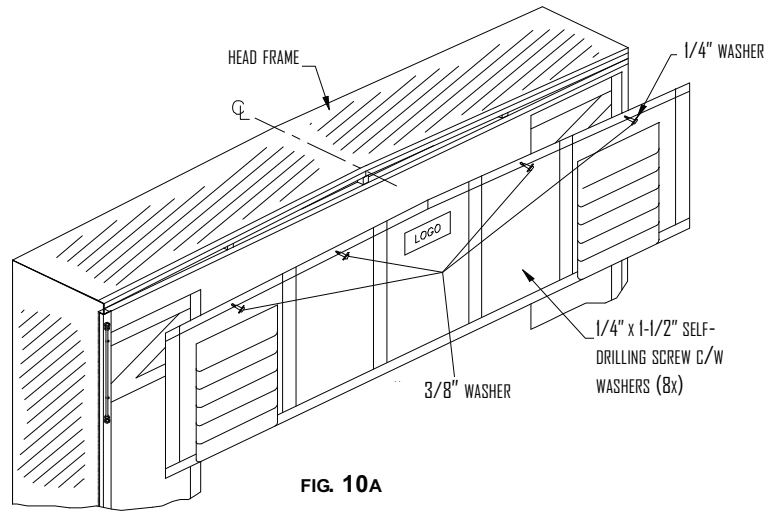


FIG. 10A

### b. Re-attach aluminum angle to front edge of head frame.

- Match holes in aluminum angle with head panel stays.
- Insert 1/4" self-drilling screws and 3/8" washers into holes (Fig. 10b).
- Secure.

### c. Attach head curtain to bottom frame member.

- Insert 1/4" self-drilling screws and 3/8" washers through head curtain stays.

### d. Attach wind strap to head curtain.

- Unfasten bottom wind strap "s" hook from vertical frame.
- Thread wind strap through head panel (Fig. 10c).
- Re-attach wind strap vertical frame.
- Repeat for other side.

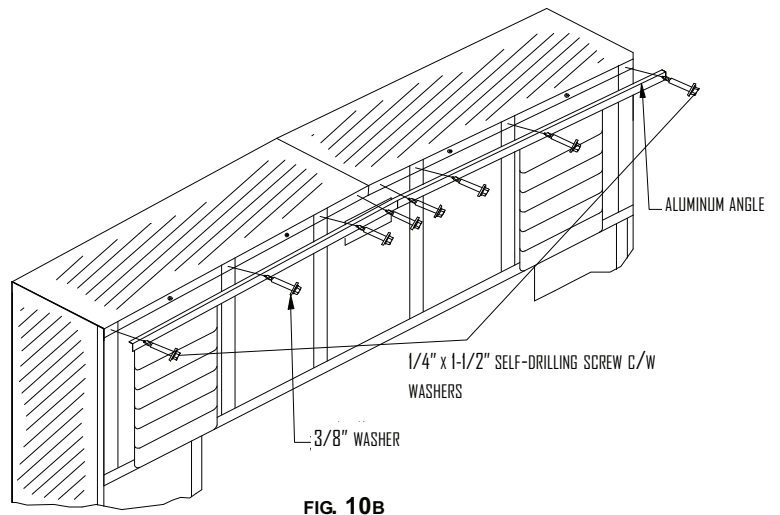


FIG. 10B

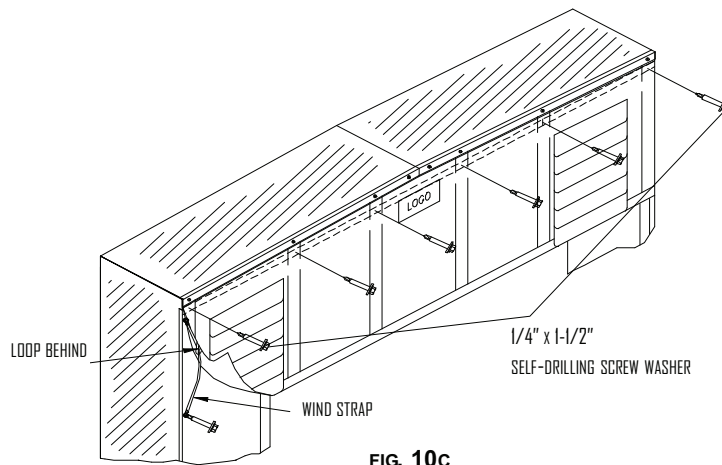


FIG. 10C

## 11. ATTACH BOTTOM PADS (if ordered)

### a. Mark bottom pad.

- Place both bottom pads so that the “No Step” patch is facing up (Fig. 11a).
- Measure 1-1/2” above bottom of each pad.
- Mark a horizontal line across the wide end of each bottom pad.

### b. Attaching mounting brackets.

- Position *two 4-hole* mounting brackets on bottom pad.
- Place long side of mounting brackets against bottom pad.
- Place corner flush to line.
- Place outside edge of each mounting bracket 4” in from each side of bottom pad.
- Attach mounting brackets to bottom pad with No. 14 flat quad screws.
- Repeat for other pad.

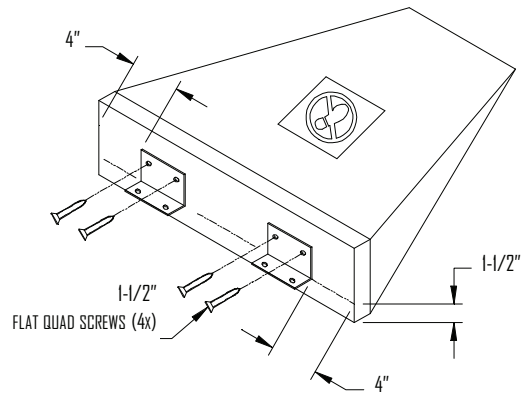


FIG. 11A

### c. Attaching bottom pad to vertical frame.

- Place bottom pad along bottom of vertical frame (Fig. 11b).
- Insert 1/4” self-drilling screws through mounting brackets and attach to vertical frame.
- Repeat for other side.

## 12. FINISH INSTALLATION

- Remove protective covering on siding, if present.
- Start at wall, work toward front; do not scratch siding.
- Caulk between head frame and wall.
- An outdoor acrylic type is recommended.

**NOTE: IF MOUNTING ON SIDING OR ON PRE-CAST CONCRETE, FILL IN GAPS WITH STYROFOAM.**

- Caulk along outside of head frame and wall, head frame aluminum angle, and any gaps around unit as needed.

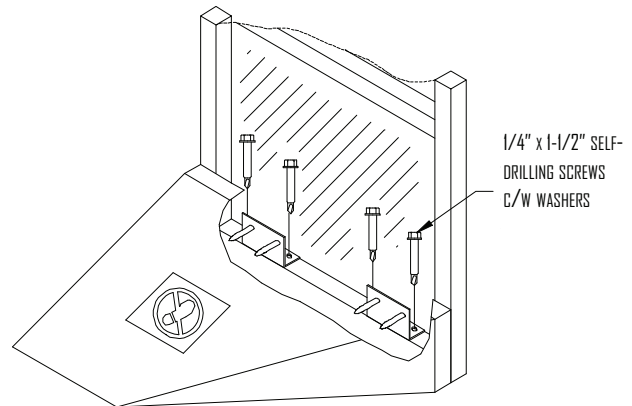


FIG. 11B

## OPTIONS INSTALLATION INSTRUCTIONS

### 01. COMMON MEMBER ORDERS:

#### 1. PREPARE DOCK DOOR OPENING.

- a. Make vertical frame mark between door openings, for common member (Fig.12).
- b. Make horizontal line flush with floor level (Fig.12).
- c. Steel guard must be perpendicular to building wall. Make sure it is level and square.
- d. Bolt steel guard to wall. Use 5/8" x 3-1/2" wedge anchor bolts or appropriate mounting hardware (not supplied).

#### 2. ATTACH MOUNTING BRACKETS TO COMMON MEMBER VERTICAL.

- a. Place vertical frames on clean, flat 2 x 4 supports (Fig. 12).

NOTE: DO NOT PUNCTURE OR SCRATCH SIDING.

- b. Position mounting brackets on wall edge of vertical frame (Fig. 14).

- Use three (3), 3-hole mounting brackets per vertical frame.
- Measure 12" in from top and bottom of vertical frame (Place along wall side, angle flush to edge).
- Position third mounting bracket below center connecting bolt.

- c. Position 4-hole angle bracket on vertical frame (Fig. 14).

- Measure 6" in from front edge on top of cross-member.
  - Position 4-hole mounting bracket on bottom of top cross-member.
- NOTE: THE TOP OF THE BRACKET WILL EXTEND ABOVE THE VERTICAL FRAME.
- Attach the mounting bracket to the vertical frame with 1/4" self-drilling screws.

- d. Flip frame over onto other side and repeat steps 2b & 2c.

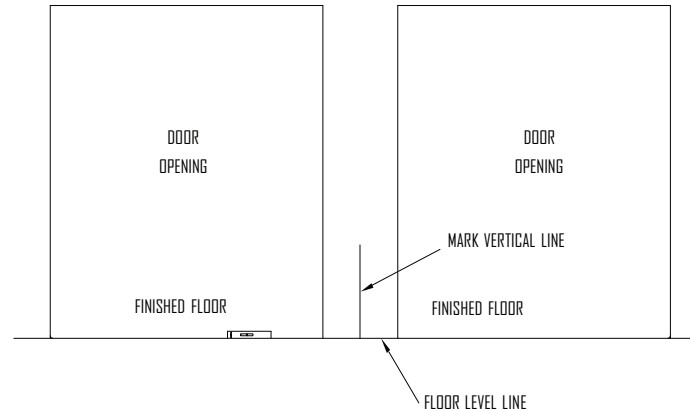


FIG. 12

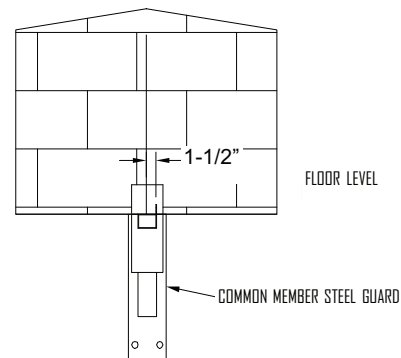


FIG. 13

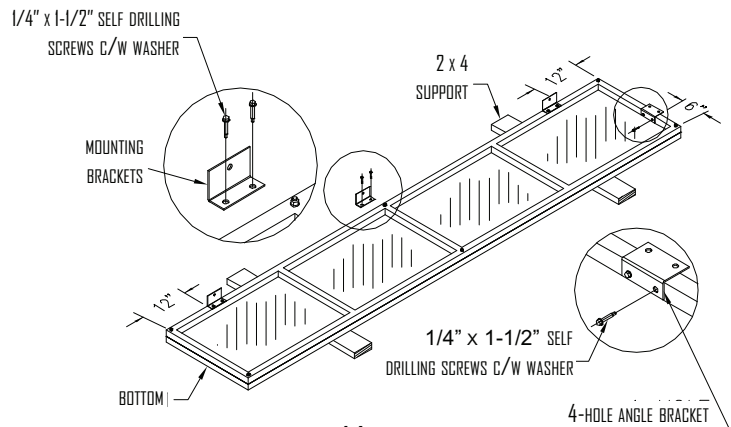


FIG. 14

### 3. ATTACHING VERTICAL PANELS TO VERTICAL FRAMES

#### a. Preparing vertical frames.

- Rest vertical frame on wall edge and mounting brackets (Fig. 15).
- Align raw edges with center of vertical frame.
- Yellow stripe appears at bottom and "Z" reinforcement appears at the top.

#### b. Position and secure vertical panel.

- Place bottom of vertical panel flush with bottom of vertical frame (Fig. 15).
- (Raw edges flush with frame edge).
- Secure at bottom with no. 10 self-drilling screw and 1/4" washer.
- Do not put screw through stay.
- Spread rest of vertical panels along vertical frame.
- Keep flush with frame edge, ensuring a tight fit.

**NOTE: VERTICAL PANELS WILL BE SHORTER THAN THE VERTICAL FRAME.**

- Secure vertical panels between stays with three other evenly spaced no. 10 self-drilling screws and 1/4" washers.

#### c. Attaching flat bar to front edge of vertical panels.

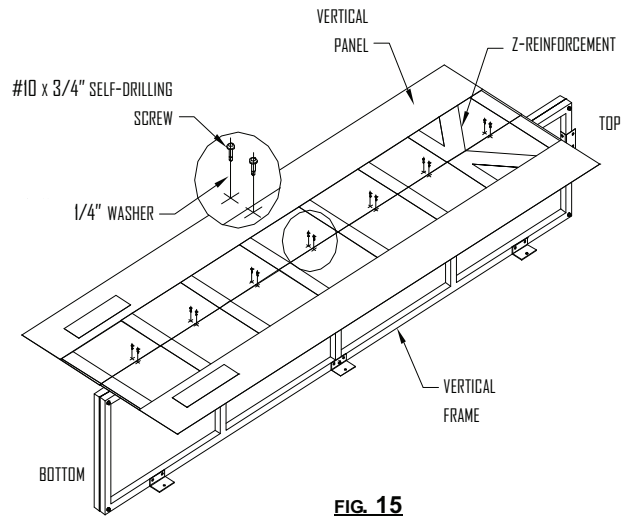
- Position flat bar evenly over back edges of vertical panels (Fig. 16).
- Secure flat bar to both vertical panels by drilling through stays using 1/4" self-drilling screws and 3/8" washers.

#### d. Attaching wind straps.

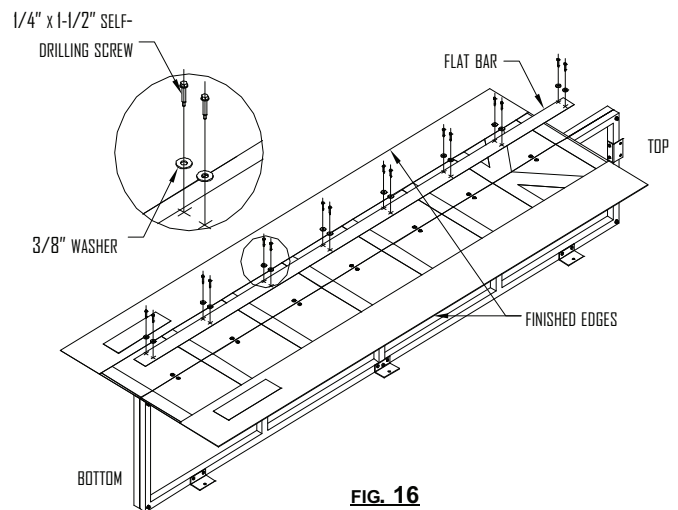
- Place wind strap "s" hook at hole at top of vertical frame (Fig. 17).
- Attach "s" hook 1" down from top and centered on each frame edge.
- Use 1/4" self-drilling screws and 3/8" washers.
- Pull wind strap down 36" along flat bar or until taut.
- Attach bottom "s" hook 3/4" in from center of flat bar.
- Use 1/4" self-drilling screw and 3/8" washer.

**\*\*TO FINISH INSTALLATION INSTRUCTIONS, PLEASE RETURN AND FINISH STEPS 4-12.**

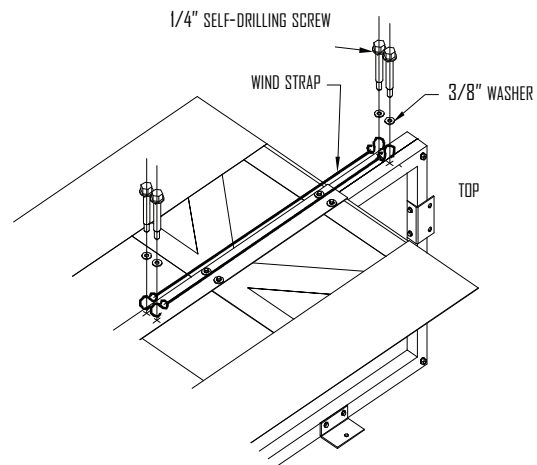
**\*\*FOR INFORMATION ON ATTACHING FRAME TO WALL, PLEASE SEE STEP. 7, PAGE 6.**



**FIG. 15**



**FIG. 16**



**FIG. 17**

## 02. SUPERSNUG PANEL ORDERS:

### 1. IDENTIFY LEFT AND RIGHT COMPONENTS.

a. Identify left and right hooks (top ends are sloped) (Fig. 18).

b. Identify left and right side vertical panels (z-reinforcements at top and yellow stripe at bottom) (Fig. 19).

### 2. ATTACH HOOK TO VERTICAL PANEL.

a. Before inserting hook into retaining track.

-Spray hook insertion edge with soap water or silicone to reduce friction.

b. Insert hook into retaining track (Fig. 20) until bottom end of hook is flush with bottom edge of vertical panel.

c. Secure hook into place by screwing through retaining track and hook at top of panel (Fig. 21).

-Pre-drill with 3/32" drill bit.

### 3. ATTACH SUPERSNUG VERTICAL PANEL TO FRAME.

-Refer to Step 5, pg. 5 for standard instructions in attaching the vertical panel to the side frames.

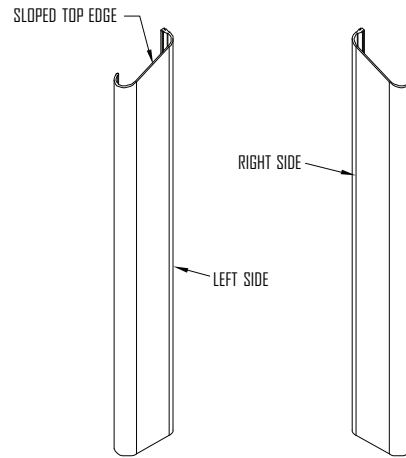


FIG.18

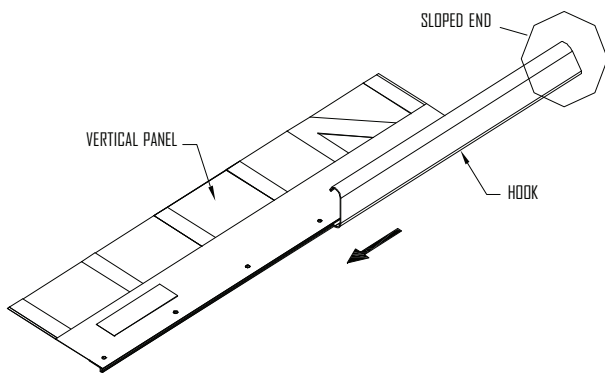


FIG.20

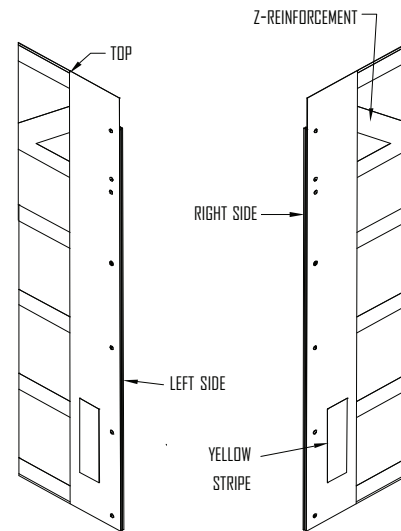


FIG.19

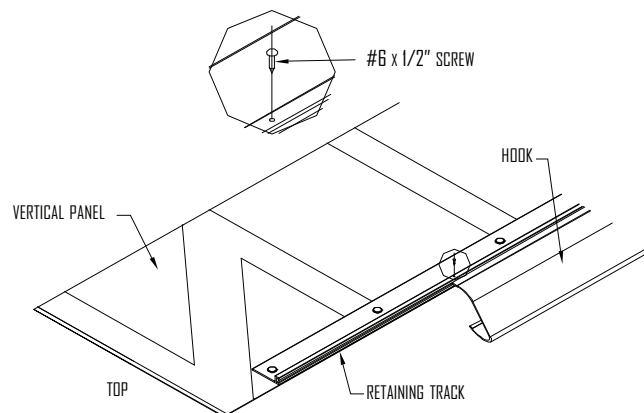


FIG.21