



## **PARTS MANUAL**

**⚠ WARNING**

*DO NOT INSTALL, OPERATE OR SERVICE THIS PRODUCT UNLESS YOU HAVE READ AND FULLY UNDERSTOOD THE ENTIRE CONTENTS OF THIS MANUAL. FAILURE TO DO SO MAY RESULT IN PROPERTY DAMAGE, BODILY INJURY OR DEATH.*

---

## Catalog

<b>ITEM#</b>	<b>DESCRIPTION</b>	<b>PAGE</b>
Fig.1	Steering control system	2
Fig.2	Handle assembly	4
Fig.3 /4	Switch box assembly	6
Fig.5	Driving system	10
Fig.6 /7	Gear box assembly	12
Fig.8	Motor brake device	16
Fig.9	Hydraulic system	18
Fig.10	Valve assembly	20
Fig.11	Hydraulic power unit	22
Fig.12	Oil pump	24
Fig.13	Cylinder assembly	26
Fig.14	Frame	28
Fig.15	Electrical appliance assembly	30
Fig.16	Balance wheel assembly	32
Fig.17	Forked frame	34
Fig.18	Forked frame	36
Fig.19	Double wheel assembly	38
Fig.20	Single wheel assembly	40
Fig.21	Compartment	42
Fig.22	Battery assembly	44

# Operating Instructions



DO NOT OPERATE OR SERVICE THIS PRODUCT UNLESS YOU HAVE READ AND FULLY UNDERSTOOD THE ENTIRE CONTENTS OF THIS MANUAL. FAILURE TO DO SO MAY RESULT IN PROPERTY DAMAGE AND/OR BODILY INJURY.

The following is intended to be a quick reference of some of the important procedures to follow while using this truck. It is not intended to cover, or suggest that it does cover, all procedures required to be followed to ensure safe operation. You must follow these instructions, observe and obey warnings located on the truck, and follow all workplace safety regulations, in addition to using general common sense to make operations as safe as possible. *Remember, you are ultimately responsible for your own safety.*

1. Before you operate this truck, you must:
  - Be trained and authorized by employer
  - Know operating and safety rules in this manual and on truck
  - Check truck for safe operation using check list in this manual
  - Ensure loads are stable, secure and within capacity plate limit
2. Ask supervisor for help if you even *think* you have a problem.
3. When you are using this truck:
  - Ensure path is clear before you move; check overhead clearance
  - Keep loads low and supported by backrest (if equipped) when traveling
  - Never lift people or let them ride
  - Never ride truck unless it has an operator platform
  - Stop work and ask for help if you have any problem
4. When you finish work:
  - Park where your supervisor says it is safe
  - Lower forks to the ground
  - Turn off key
  - Set parking brake
  - Push power disconnect button

## Pre-Operation Check

Workplace safety regulations require that all trucks be inspected before each shift. Follow inspection point list below to complete this check. If anything is found to be wrong with truck, then it must be taken out of operation. Do not use a truck which fails this inspection.

### Inspection Point List:

**Safety Reversing Button:** Is it in place and free of obvious damage? Test button for proper operation (Test procedure: while operating truck in low reverse speed / direction, press button with other hand. With button pressed, truck should change to high forward speed / direction, and horn should sound. If this does not occur, take truck out of service and inspect.)

**Load Backrest (if equipped):** Is backrest in place, is there any damage which weakens it?

**Warning Decals:** Ensure all decals are in place and readable.

**Mast Safety Screen:** Is it in place and free of obvious damage?

Fig.1 Steering control system

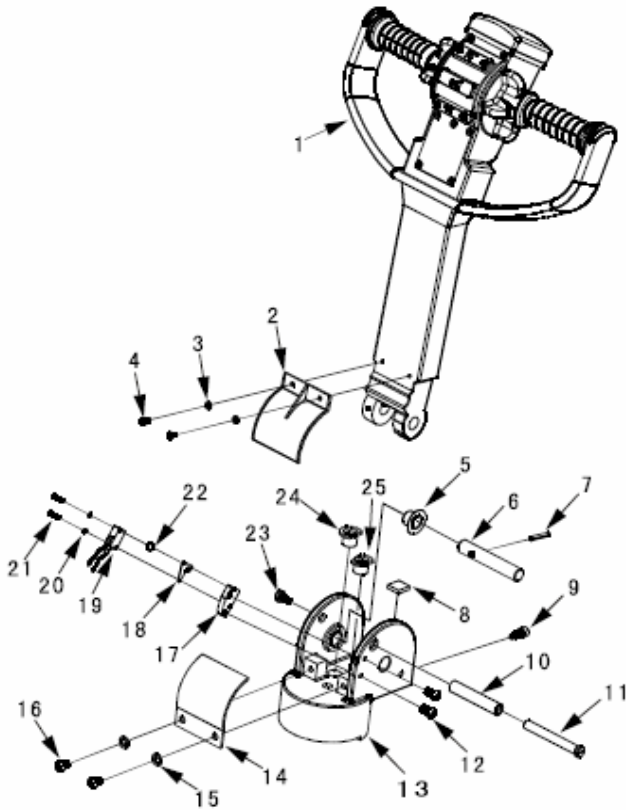


Fig.1 Steering control system

ITEM #	PART#	NAME	#FOR ASSY.
1	6000500001	Handle assembly	1
2	2000508001	Outer covering plate	1
3	2000537002	Washer	2
4	2000541002	Screw	2
5	2000512002	Lubricated bush	2
6	2000513001	Pin shaft	1
7	2000536001	Spring pin	1
8	2000534003	Rubber washer	1
9	2000231001	Screw	2
10	2000534002	Rubber sleeve	1
11	2000513003	Pin shaft	1
12	2000541004	Screw	2
13	6000502001	Handle socket	1
14	2000508002	Inner cover plate	1
15	2000537001	Washer	2
16	2000541003	Screw	2
17	2000535004	Installing plate	1
18	2000509002	Fastening sheet	1
19	2000507004	Inching switch	1
20	2000537003	Washer	2
21	2000541001	Screw	2
22	2000504001	Steel ball	1
23	2000525004	Screw	1
24	2000534004	Rubber sleeve	2
25	2000534005	Rubber sleeve	1

Fig.2 Handle assembly

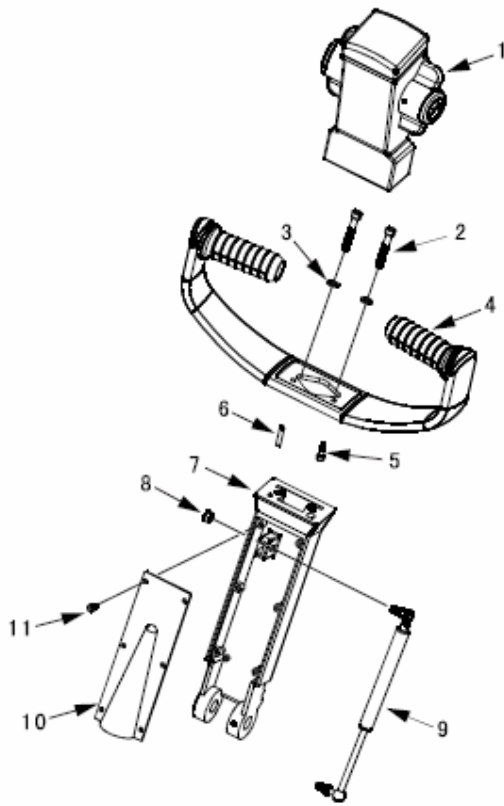


Fig.2 Handle assembly

ITEM #	PART#	NAME	#FOR ASSY.
1	1000500001	Switch box assembly	1
2	2000931008	Screw	2
3	2000537001	Washer	2
4	2000517001	Handle	1
5	1000538002	Screw	1
6	2000536010	Spring pin	1
7	2000501006	Handle tube	1
8	2000739002	Nut	1
9	6000519001	Pneumatic spring complete	1
10	2000502001	Covering plate	1
11	2000542001	Screw	6

Fig. 3 Switch box assembly

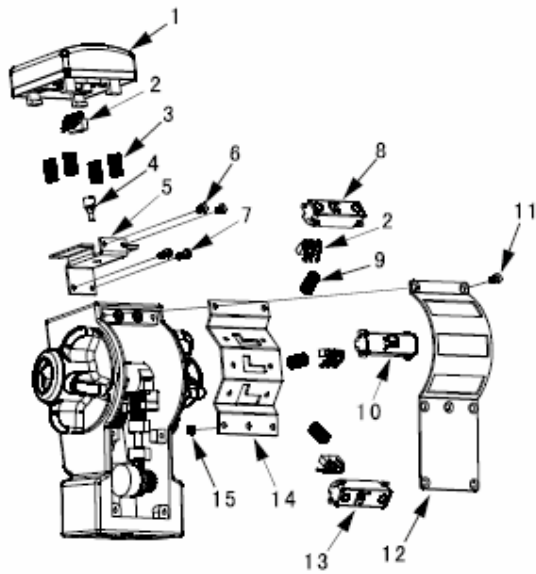
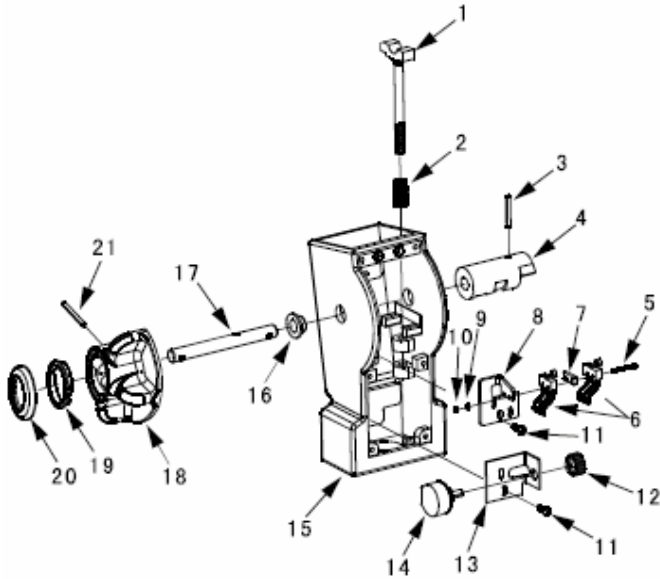


Fig. 3 Switch box assembly

ITEM #	PART#	NAME	#FOR ASSY.
1	2000540007	Emergency reverser button	1
2	2000507002	Inching switch	4
3	2000519002	Spring	4
4	2000540001	Rubber contact	1
5	2000518001	Fastening plate	1
6	2000542003	Screw	2
7	2001141005	Screw	2
8	2000540002	Button for lifting	1
9	2000519003	Spring	6
10	1000440001	Horn button	1
11	2000542003	Screw	7
12	2000509001	Cover	1
13	2000540003	Button for lowering	1
14	2000518002	Supporting plate	1
15	2000539001	Nut	1

Fig. 4 Switch box assembly

Fig. 4 Switch box assembly



ITEM #	PART#	NAME	#FOR ASSY.
1	2000501004	Rack	1
2	2000519004	Spring	1
3	2000536011	Spring pin	1
4	2000501005	Cam	1
5	2000538005	Screw	2
6	2000507003	Inching switch	2
7	2000535001	Isolate block	1
8	2000518003	Fastening bracket	1
9	1000504001	Washer	4
10	2000539002	Nut	2
11	2001141005	Screw	4
12	2000521001	Gear	1
13	2000518004	Fastening bracket	1
14	2000507007	Potentiometer	1
15	1000529001	Switch box	1
16	2000512001	Copper sleeve	2
17	2000513002	Cam shaft	1
18	2000540005	Control knob	2
19	2000535003	Connecting washer	2
20	2000534001	Cover	2
21	2000536012	Spring pin	2

Fig.5 Driving system

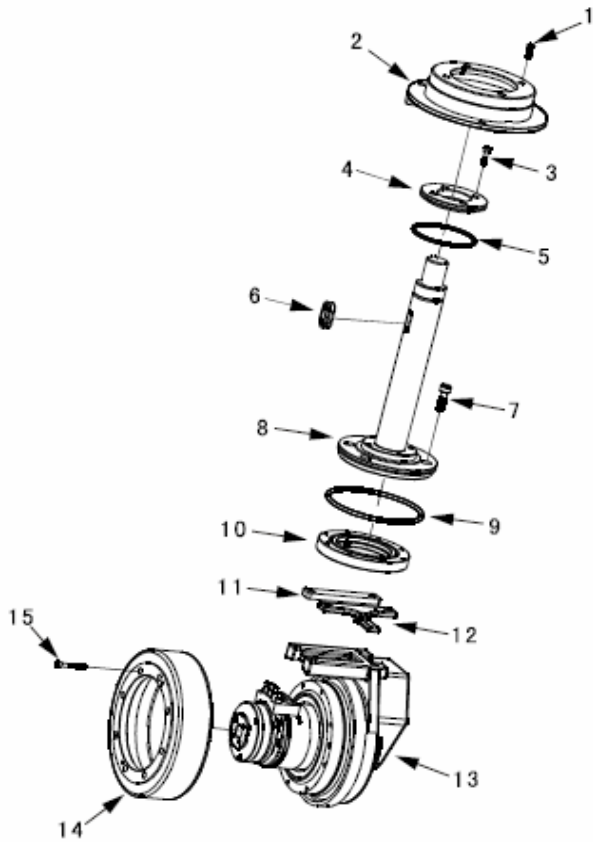


Fig.5 Driving system

ITEM #	PART#	NAME	#FOR ASSY.
1	6000141005	Screw	4
2	6001210001	Position	1
3	2000831001	Screw	4
4	6001210002	Seating	1
5	6000128001	O-ring	1
6	6001134001	Rubber sleeve	1
7	2000131001	Screw	4
8	6001201002	Link disk	1
9	6000128002	O-ring	1
10	6001220001	Bearing	1
11	6001202003	Supporting plate	1
12	6001202001	Position plate	1
13	6000100001	Gear box assembly	1
14	6000332001	Drive wheel assembly	1
15	6000131001	Screw	8

Fig. 6 Gear box assembly

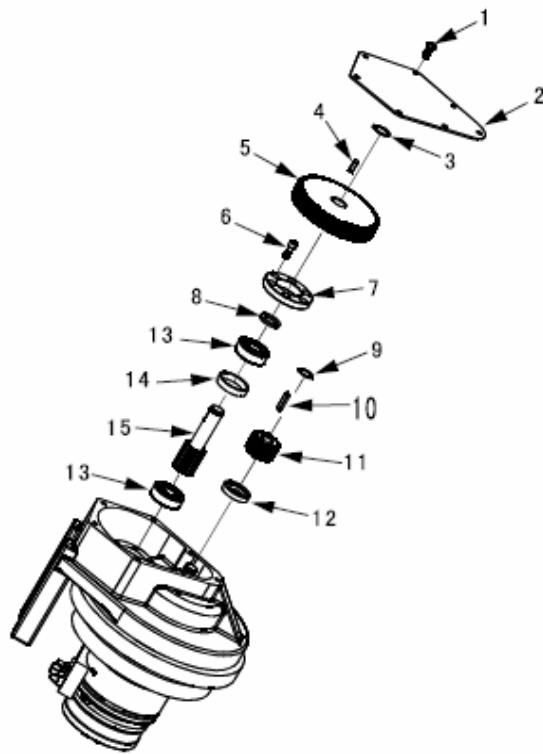


Fig. 6 Gear box assembly

ITEM #	PART#	NAME	#FOR ASSY.
1	2000941001	Screw	7
2	6000111001	Side cover	1
3	6000127003	Snap ring	1
4	6000133002	Flat key	1
5	6000121001	Gear	1
6	4000831001	Screw	6
7	6001211001	Cover	1
8	6000137001	Washer	1
9	6001427001	Snap ring	1
10	6000133001	Flat key	1
11	6000121003	Gear	1
12	6000105002	Seal washer	1
13	6000120001	Bearing	2
14	6000137002	Bearing sleeve	1
15	6000121002	Gear	1

Fig. 7 Gear box assembly

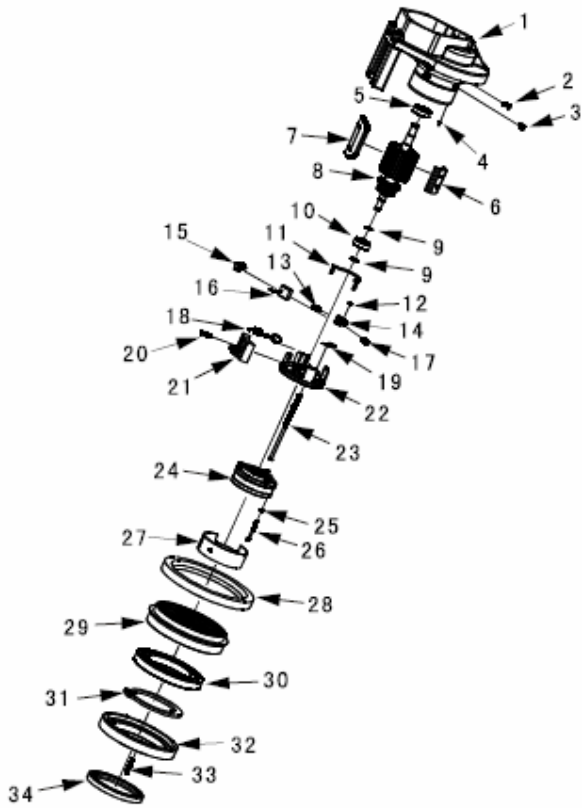


Fig. 7 Gear box assembly

ITEM #	PART#	NAME	#FOR ASSY.
1	6000126001	Gear box body	1
2	2000442001	Screw	4
3	6001442002	Screw	4
4	6001433001	Pin	1
5	6001420002	Bearing	1
6	6001402001	Stator	4
7	6001400001	Bobbin	1
8	6001400002	Rotor	1
9	6001427001	Snap ring	2
10	6001420003	Bearing	1
11	6001418001	Link piece	2
12	2000539001	Nut	8
13	6001419001	Spring	4
14	6001418002	Left carbon brush socket	2
15	6001418003	Right carbon brush socket	2
16	6001407001	Carbon brush	4
17	2001141005	Screw	4
18	6001419002	Spring	1
19	6001434001	Insulating plate	4
20	6000131005	Screw	1
21	6001407002	Junction socket	1
22	6001411001	Top cover	1
23	6001425001	Screw	2
24	6001400003	Motor brake device	1
25	2001437006	Circlip	3
26	6000131006	Screw	3
27	6001409001	Protection plate	1
28	6000105003	Seal washer	1
29	6000121004	Gear	1
30	6000120002	Bearing	1
31	6000127002	Snap ring	1
32	6000110001	Link disk	1
33	6000131004	Screw	2
34	6000105001	Seal washer	1

Fig. 8 Motor brake device

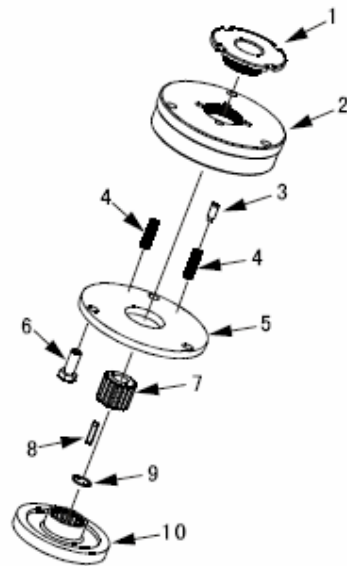


Fig. 8 Motor brake device

ITEM #	PART#	NAME	#FOR ASSY.
1	6001011001	Adjusting nut	1
2	6001400004	Brake socket assembly	1
3	6001033001	Adjusting block	4
4	6001019001	Spring	7
5	6001002001	Brake component	1
6	6001025001	Bolt	3
7	6001021001	Gear	1
8	6001433002	Flat key	1
9	6001427002	Snap ring	1
10	6001002002	Brake disk	1

Fig.9 Hydraulic system

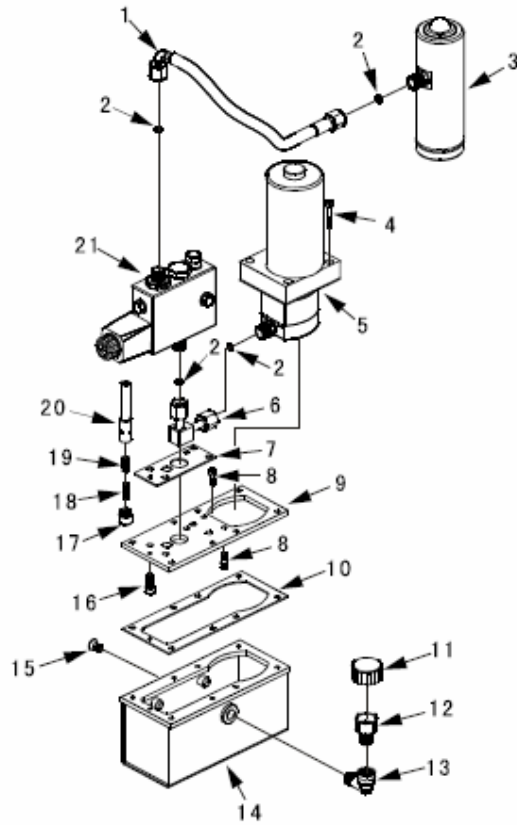


Fig.9 Hydraulic system

ITEM #	PART#	NAME	#FOR ASSY.
1	6000614001	Soft oil pipe	1
2	1000628002	O-ring	4
3	6000600001	Cylinder assembly	1
4	6000631001	Screw	4
5	6000600002	Hydraulic power units	1
6	6000603001	Hard oil pipe	1
7	6000605001	Cork cushion	1
8	4000831001	Screw	6
9	6000611001	Oil tank cover	1
10	6000605002	Cork cushion	1
11	1000605003	Cover	1
12	1000605001	Oil plug	1
13	1000635001	Joint	1
14	6000626001	Oil tank	1
15	6000642001	Screw	4
16	4000231002	Screw	4
17	2000625004	Screw	1
18	2000619004	Spring	1
19	2000614008	Core of slide valve	1
20	6000603002	Oil eduction tube	1
21	6000600003	Valve assembly	1

Fig.10 Valve assembly

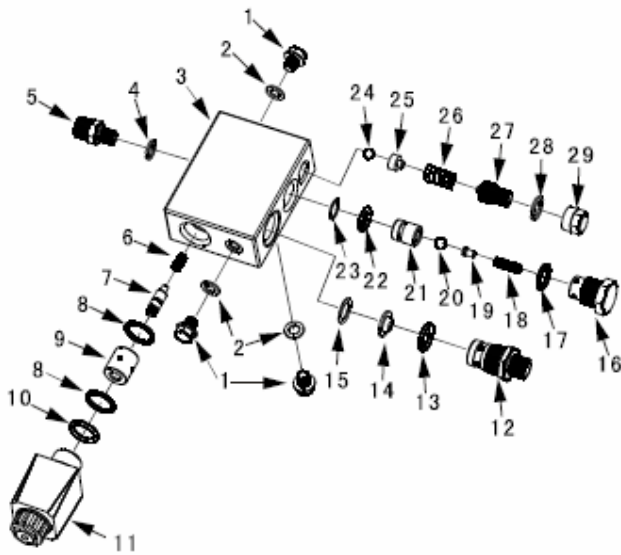


Fig.10 Valve assembly

ITEM #	PART#	NAME	#FOR ASSY.
1	2000630001	Screw	3
2	2000637001	Washer	3
3	6000603003	Valve body	1
4	6000637001	Washer	1
5	6000603004	Joint	1
6	2000619001	Spring	1
7	2000603003	Core of slide valve	1
8	2000628007	O-ring	2
9	2000603002	Side valve sleeve	1
10	2000628008	O-ring	1
11	2000603018	Electromagnetic coil	1
12	6000603005	Joint	1
13	2000628018	O-ring	1
14	2000634002	Filter net	1
15	2000637005	Washer	1
16	2000603005	Valve hold	1
17	2000628009	O-ring	1
18	2000619003	Spring	1
19	2000613001	Spring socket	1
20	2000604001	Steel ball	1
21	2000603004	Valve sleeve	1
22	2000628010	O-ring	1
23	2000634001	Washer	1
24	2000604002	Steel ball	1
25	2000603009	Spring socket	1
26	2000619002	Spring	1
27	2000603007	Pressure adjusting bolt	1
28	2000637002	Washer	1
29	2000603008	Nut	1

Fig. 11 Hydraulic power unit

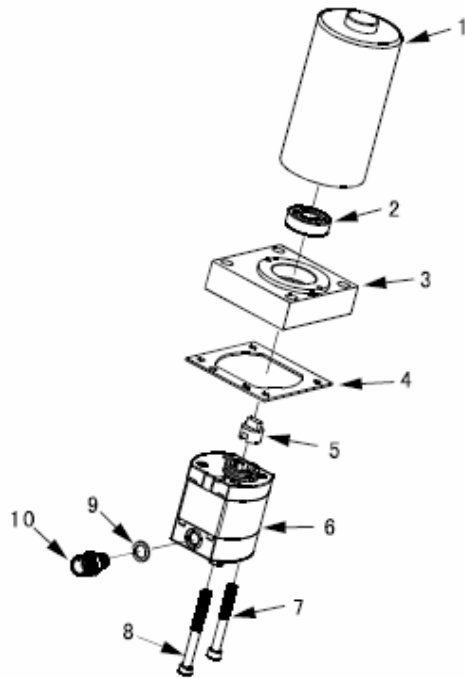


Fig. 11 Hydraulic power unit

ITEM #	PART#	NAME	#FOR ASSY.
1	6001400005	Hydraulic motor	1
2	6000620001	Bearing	1
3	6000610001	Link block	1
4	6000605003	Cork cushion	1
5	6000603006	Joint sleeve	1
6	6000600004	Oil pump assembly	1
7	1000631002	Screw	2
8	2000631001	Screw	2
9	6000637001	Washer	1
10	6000603007	Joint	1

Fig.12 Oil pump

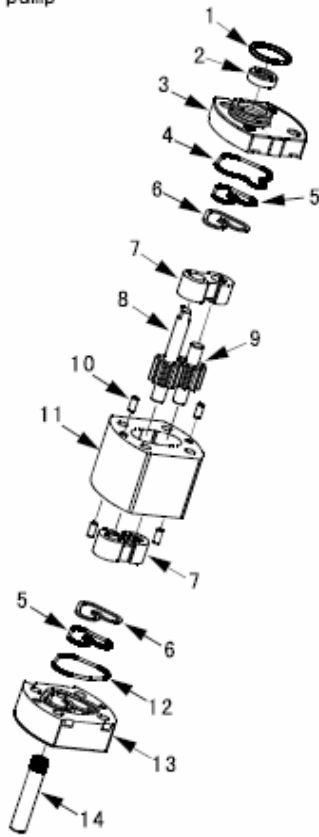


Fig.12 Oil pump

ITEM #	PART#	NAME	#FOR ASSY.
1	2000628001	O-ring	1
2	2000605001	Seal	1
3	6000611003	Oil Out cover	1
4	2000628003	O-ring	2
5	2000628004	O-ring	2
6	6000605004	O-ring protection washer	2
7	6000603008	Oil discharge block	2
8	6000621004	Drive gear	1
9	6000621005	Driven gear	1
10	2000633001	Pin	4
11	6000629001	Pump body	1
12	2000628005	O-ring	1
13	6000611002	Oil feed cover	1
14	6000614002	Oil suction pipe	1

Fig. 13 Cylinder assembly



Fig. 13 Cylinder assembly

ITEM			
#	PART#	NAME	#FOR ASSY.
1	6000613001	Piston rod	1
2	4000605001	Dust ring	1
3	4000605002	Seal	1
4	6000414003	Cylinder body	1

Fig. 14 Frame

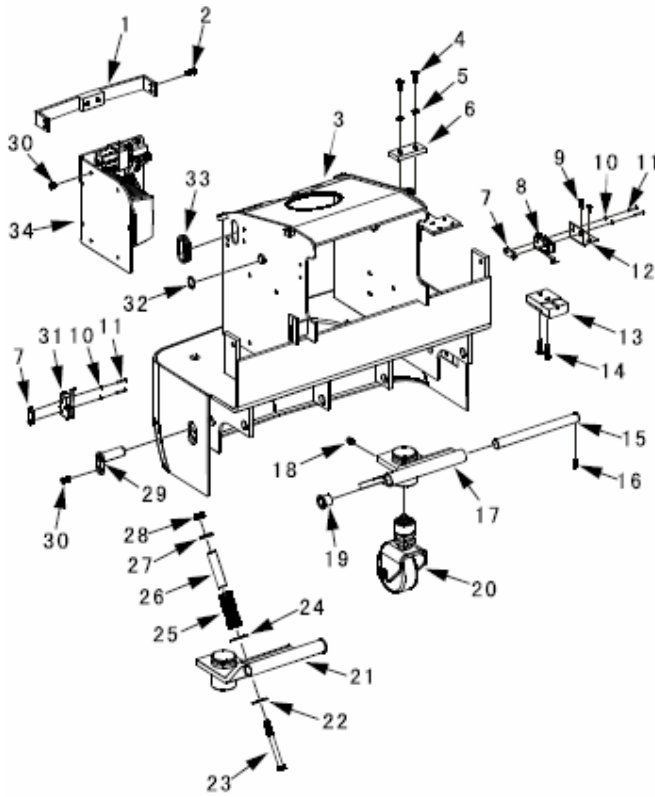


Fig. 14 Frame

ITEM #	PART#	NAME	#FOR ASSY.
1	6000918001	Supporting seat	1
2	4000831001	Screw	4
3	6000724001	Frame	1
4	2000931006	Screw	8
5	2000537001	Washer	8
6	6000435002	Ward block	4
7	1000435003	Position block	2
8	6000407001	Inching switch	1
9	2001141005	Screw	2
10	2000537003	Washer	4
11	1000441007	Screw	4
12	6000435001	Inching switch seat	1
13	2001107001	Connector socket	1
14	6001141001	Screw	2
15	6001213001	Shaft	2
16	6000736001	Spring pin	2
17	6001218001	Left balance wheel seat	1
18	6001225001	Screw	2
19	4000912001	Compound bearing	4
20	6001200001	Balance wheel assemble	2
21	6001218002	Right balance wheel seat	1
22	6001237001	Washer	2
23	6001225002	Screw	2
24	6001237002	Washer	2
25	6001219001	Spring	2
26	6001212001	Spring sleeve	2
27	6001237003	Washer	2
28	1000239002	Nut	2
29	6000813001	Bracket pin	2
30	6001442001	Screw	6
31	1000407002	Inching Switch	1
32	4000227001	Snap ring	2
33	6000534001	Rubber washer	2
34	6000400001	Electrical appliance assembly	1

Fig. 15 Electrical appliance assembly

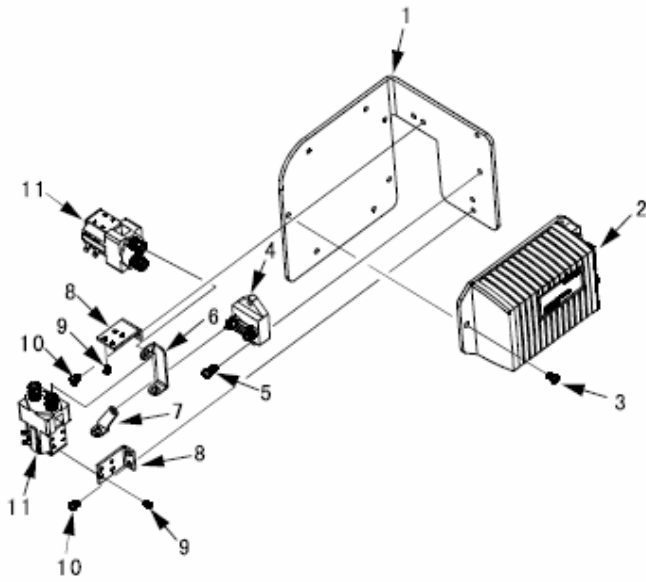


Fig. 15 Electrical appliance assembly

ITEM #	PART#	NAME	#FOR ASSY.
1	6000418001	Install plate	1
2	2000406002	Controller	1
3	6000441003	Screw	3
4	2000407003	Fuse	1
5	6000441002	Screw	2
6	6000418002	Sheet copper	1
7	6000418003	Sheet copper	1
8	6000418004	Install plate	2
9	2000441002	Screw	8
10	6000441001	Screw	4
11	1000307001	Contact	2

Fig. 16 Balance wheel assembly

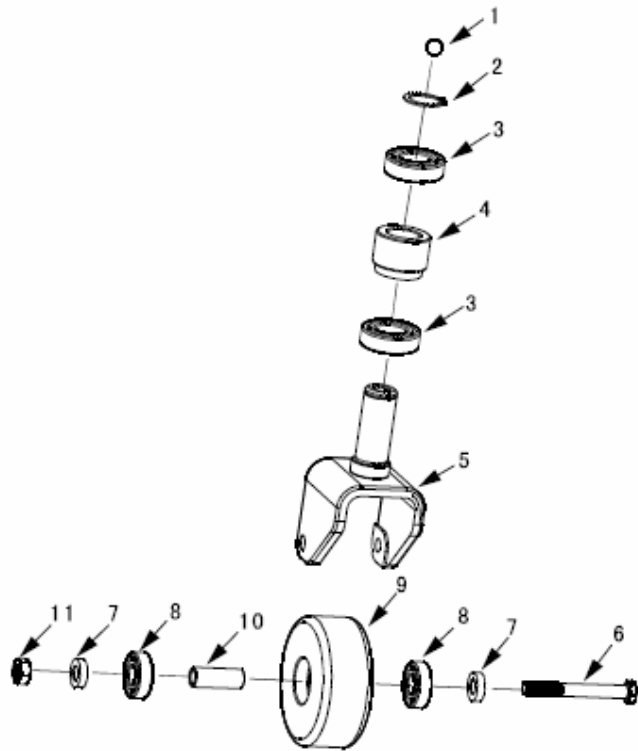


Fig. 16 Balance wheel assembly

ITEM #	PART#	NAME	#FOR ASSY.
1	1000304003	Steel ball	1
2	6000727001	Snap ring	1
3	6000320001	Bearing	2
4	6001212002	Nylon sleeve	1
5	6000318003	Wheel bracket	1
6	6001225003	Screw	1
7	6001237004	Washer	2
8	6001420001	Bearing	2
9	6000332002	Wheel	1
10	6001212004	Sleeve	1
11	1000239002	Nut	1

Fig. 17 Forked frame

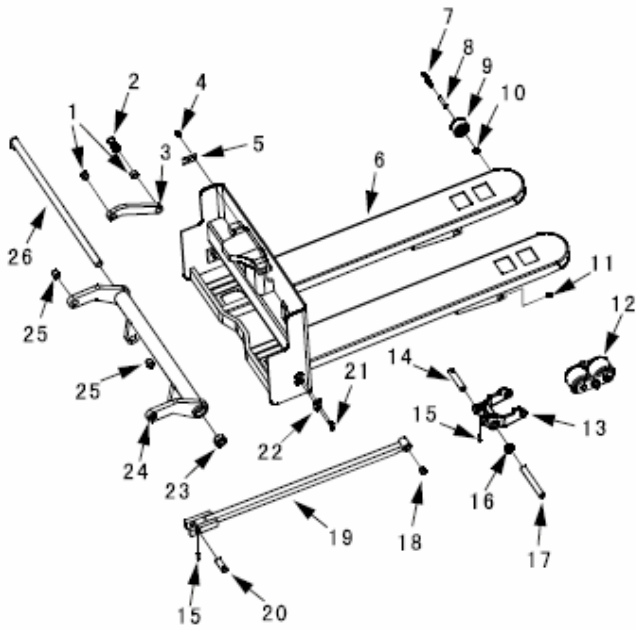
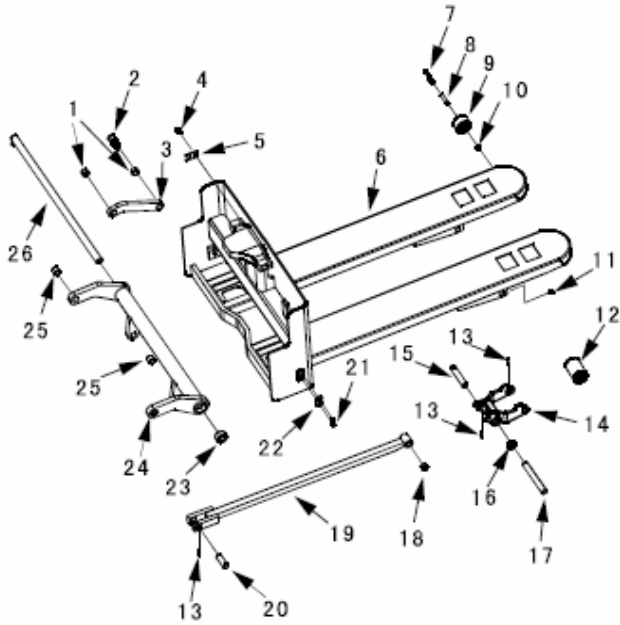


Fig. 17 Forked frame

ITEM #	PART#	NAME	#FOR ASSY.
1	6000812001	Compound bearing	4
2	6000313001	Screw	2
3	6000223001	Link	2
4	2000541003	Screw	2
5	6000809001	Lock piece	2
6	6000724002	Forked frame	1
7	6001430001	Screw	2
8	6000312001	Sleeve	2
9	6000332005	Wheel	2
10	2000739002	Nut	2
11	1000225002	Screw	2
12	6000300001	Double wheel assembly	2
13	6000318002	Wheel fork	2
14	6000213001	Shaft	2
15	4000736001	Spring pin	4
16	6000212001	Position block	4
17	6000213002	Shaft	2
18	6000212002	Compound bearing	2
19	6000201001	Link	2
20	6000213003	Shaft	2
21	6001442001	Screw	3
22	6000835001	Position block	3
23	6000812002	Sleeve	2
24	6000202001	Bracket	1
25	4000812001	Compound bearing	4
26	6000213004	Shaft	1

Fig. 18 Forked frame

Fig. 18 Forked frame



ITEM #	PART#	NAME	#FOR ASSY.
1	6000812001	Compound bearing	4
2	6000313001	Screw	2
3	6000223001	Link	2
4	2000541003	Screw	2
5	6000809001	Lock piece	2
6	6000724003	Forked frame	1
7	6001430001	Screw	2
8	6000312001	Sleeve	2
9	6000332005	Wheel	2
10	2000739002	Nut	2
11	1000225002	Screw	2
12	6000300002	Single wheel assembly	2
13	4000736001	Spring pin	6
14	6000318001	Wheel fork	2
15	6000213001	Shaft	2
16	6000212001	Position block	4
17	6000213002	Shaft	2
18	6000212002	Compound bearing	2
19	6000201002	Link	2
20	6000213003	Shaft	2
21	6001442001	Screw	3
22	6000835001	Position block	3
23	6000812002	Sleeve	2
24	6000202002	Bracket	1
25	4000812001	Compound bearing	4
26	6000213004	Shaft	1

Fig. 19 Double wheel assembly

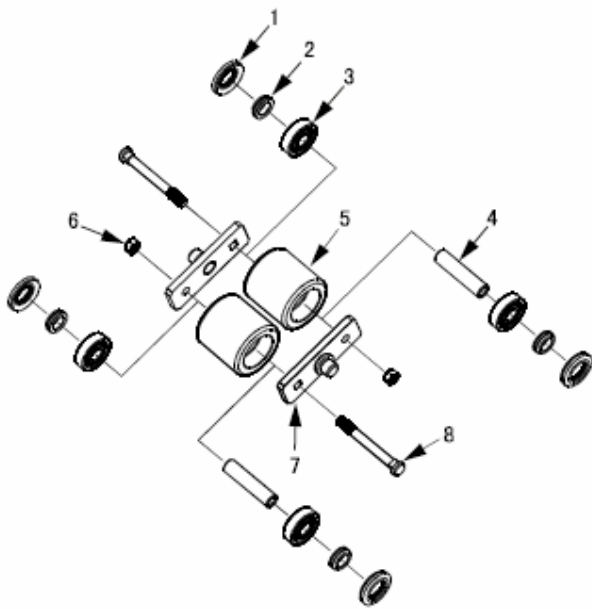


Fig. 19 Double wheel assembly

ITEM #	PART#	NAME	#FOR ASSY.
1	2000305001	Seal	4
2	2000312001	Ring	4
3	1000320002	Bearing	4
4	6000312002	Tube	2
5	6000332003	Loading wheel	2
6	1000339002	Nut	2
7	1000302001	Plate	2
8	6000325001	Screw	2

Fig. 20 Single wheel assembly

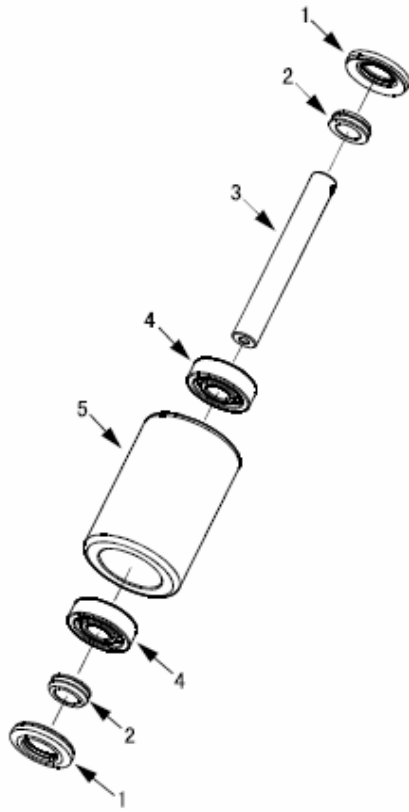


Fig. 20 Single wheel assembly

ITEM #	PART#	NAME	#FOR ASSY.
1	2001205001	Seal	2
2	2001212001	Ring	2
3	6000313002	Shaft	1
4	2001220002	Bearing	2
5	6000332004	Loading wheel	1

Fig. 21 Compartment

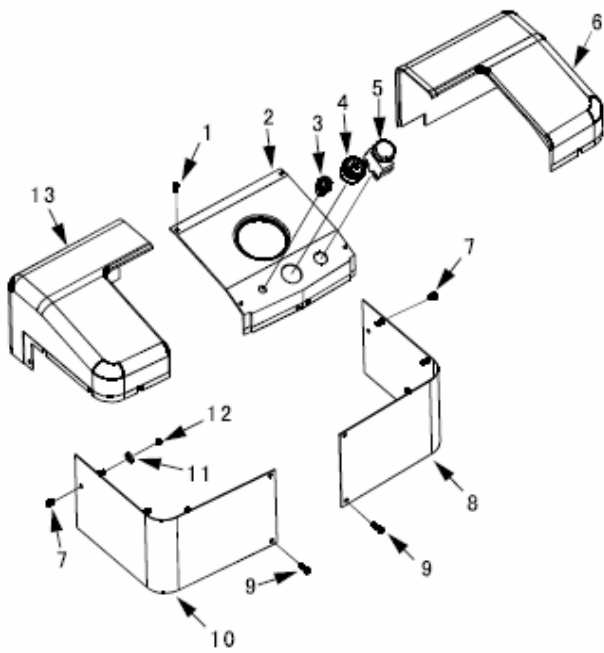


Fig. 21 Compartment

ITEM #	PART#	NAME	#FOR ASSY.
1	4000831001	Screw	4
2	6000908002	Middle panel	1
3	2000507008	Key	1
4	2001116001	Batter indicator	1
5	2000407001	Emergency stop button	1
6	6000908003	Left panel	1
7	2000541003	Screw	2
8	6000909001	Right frame	1
9	2000925001	Screw	4
10	6000909002	Left frame	1
11	2000935001	Washer	6
12	2000939001	Nut	6
13	6000908001	Right panel	1

Fig. 22 Battery assembly

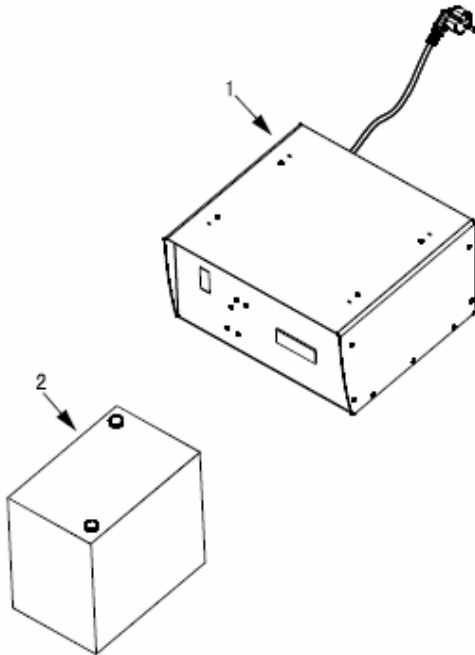


Fig. 22 Battery assembly

ITEM #	PART#	NAME	#FOR ASSY.
1	6001100002	Battery charger (220V, 50Hz)	1
2	6001100001	Battery pack	2

Fig. 22 Battery assembly

1	6001100003	Battery charger (110V, 60Hz)	1
2	6001100001	Battery pack	2







85 Heart Lake Road South  
Brampton, Ontario, Canada L6W 3K2  
Phone: 905-457-3900 • Fax: 905-457-2313  
[www.BlueGiant.com](http://www.BlueGiant.com)

**BLUE GIANT EQUIPMENT CORPORATION**